

Shropshire Safeguarding Children Board (SSCB) Business Plan 2016-18

SSCB has the responsibility to:

- a) Coordinate what is done by each person or body represented on the board for the purposes of safeguarding and promoting the welfare of children in the area; and
- b) Ensuring the effectiveness of what is done by each person or body for those purposes.

Business plan Priority areas 2016-18

From the strategic objectives of SSCB 3 priority areas have been identified, through the scrutiny and monitoring by the SSCB in the previous year, and have been highlighted through the Annual Report 2015-16 as areas for detailed focus over the next period.

Priority area*	1. Childhood Neglect	2. Child Sexual Exploitation and children who go missing	3. Domestic abuse
SSCB focus	<i>Promotion and use of the Graded Care Profile to identify concerns of childhood neglect to enable effective recognition and response at the early stage of indicators of neglect through early help, and in circumstances where there are concerns about chronic and children are suffering / likely to suffer significant harm neglect is identified.</i>	<i>Revised strategy in place and working well, children at risk of CSE are identified, helped and protected</i>	<i>Agencies are able to identify children who are exposed to domestic abuse Services are provided to victims of domestic abuse, including addressing the impact on children, and perpetrators of domestic abuse There is a reduction in the number of children exposed to domestic abuse. and plans</i>
Training sub group	Understanding and responding to neglect is included in staff training; GCP is included in training	CSE awareness and responding to CSE is included in staff training (including use of CSE Screening tool across agencies).	Training is available in relation to Domestic Abuse & its Impact on Children & Young People
CSE sub group		Assured that revised CSE strategy is in place. Pathways for recognising, referring, responding to CSE are fully reviewed and fit for purpose; Function of	

		CSE panel reviewed and is functioning effectively.	
QAP sub group	Score card developed for understanding the extent of childhood neglect in Shropshire; multi agency case audit on neglect scheduled in to work plan	Score card developed for understanding the extent and nature of CSE/Missing in Shropshire; multi agency case audit on CSE/ missing scheduled in to work plan	Score card developed for understanding the extent and nature of domestic abuse and its impact on children in Shropshire; multi-agency case audit on DA scheduled in to work plan. Also consider Information from MAPPA and MARAC
L&I	When considering cases for review the group to identify any areas that may highlight issues relating to the priority areas, also plan the dissemination of learning from multi agency case audits		
P&P	Procedures and guidance regarding the expectations of the use of the GCP across partnerships in Shropshire; review neglect strategy	CSE pathways, and process when children go missing written in to multi agency procedures and fully up to date.	Clear procedures and guidance in place re: DA, including MARAC and MAPPA guidance
Executive Group	Review the business plans and work programmes of the sub groups, particularly in relation to priority areas; receive findings from score cards/ case audits and identify risks and assurances for the SSCB meetings to reflect and consider; receive assurance / risk reporting in relation to wider safeguarding children issues and report to SSCB.		

**** The child's journey****. Audits and performance analysis carried out by the SSCB in relation to the priority areas will take account of the child's journey through the safeguarding system, for example in early help; targeted services (child protection; step up/ step down)

The SSCB has core business and functions:

- Ensure that comprehensive procedures and guidance are in place to support organisations and practitioners in carrying out their roles and functions individually and together to safeguard and promote the welfare of children.
- Ensure that there is effective training available to equip staff with the skills and knowledge to safeguard children.
- Consider any learning from case reviews.
- Evaluate the effectiveness of agencies ability to safeguard children through reviewing of quantitative and qualitative performance information (agency data/ case audits etc).

Whilst the SSCB will want assurance about the breadth of safeguarding children in Shropshire, the board and the sub groups should focus on the identified priority areas in detail. The Board, executive and sub groups business cycle should ensure that the 3/4 priority areas are being addressed,

considered and reflected upon so that the SSCB can be assured that as much as possible is being done and is in place to protect children in relation to these safeguarding priorities, and any risks or concerns are highlighted.

The business plan above sets out the expectations of what each sub group will do in relation to the priority areas as it carries out its core business, and these issues should be set in the sub group business plans

SSCB Assurance reporting;

In addition to the priority areas outlined above the Board will seek assurance regarding the following areas of activity in relation to safeguarding children in Shropshire, that should be scheduled in to the reporting cycle:

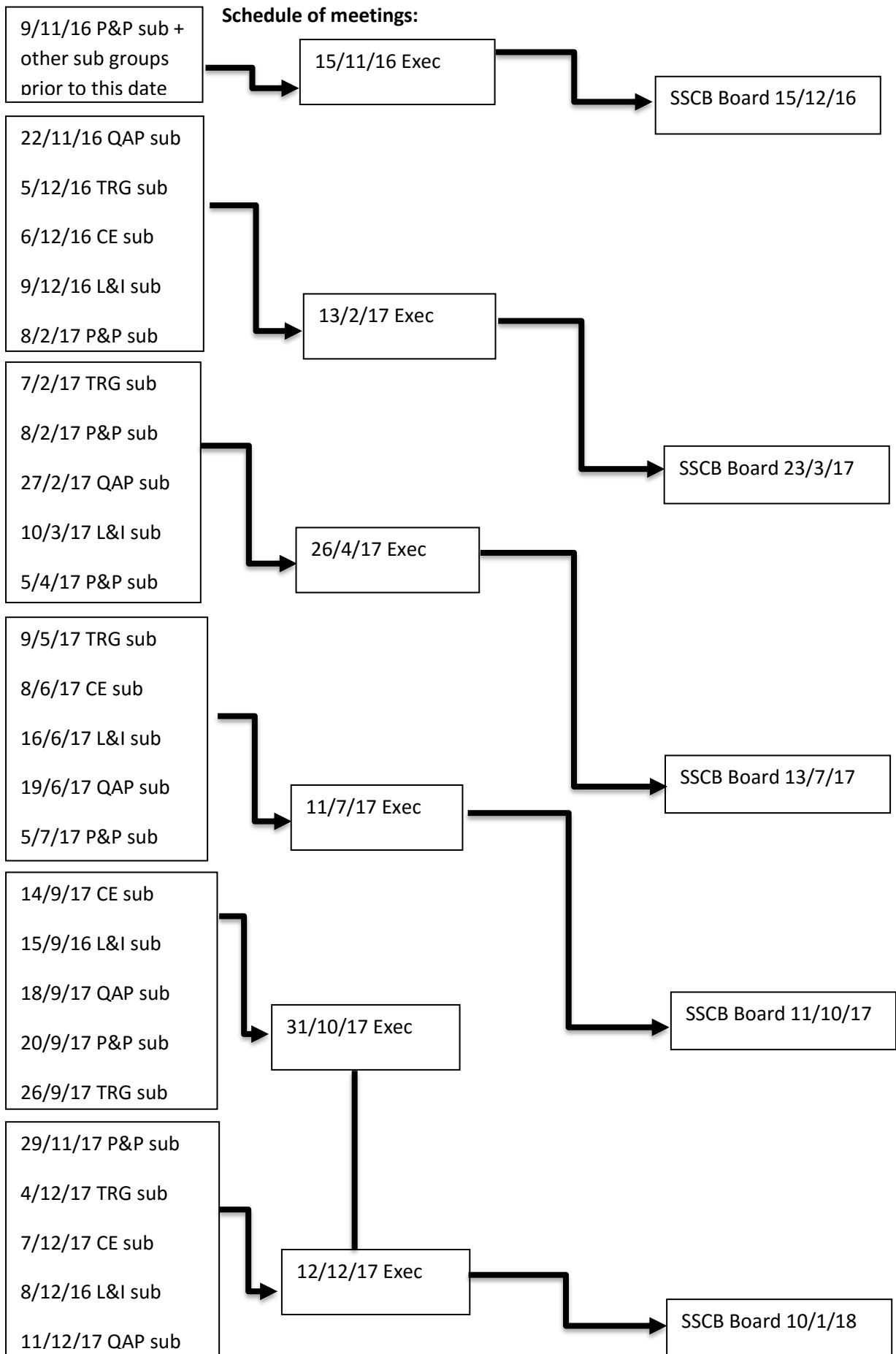
- Recognition and response to private fostering
- Awareness and systems in place to recognise and respond to FGM; Forced Marriage; HBV
- Prevent strategy and process in place and working effectively
- Reporting re: Looked after children (including IRO/CP chairs report; LADO activity)
- Assurance reporting from partner agencies: Public protection (Police; Probation; CRC; YOS); Health (CCG; Hospital Trust; MH Trust); Wider partnership.
- Early Help services assurance reporting

[based on agency reporting from previous year and aims / objectives identified in the assurance reporting in SSCB Annual report 2015-16]

SSCB systems improvement to support the Board's functions and responsibilities of scrutiny, challenge, seeking assurance of effective working together to safeguard children.

These are the main areas identified through the Annual Report 2015-16 that the board needs to progress to improve how it carries out its role. The annual report also highlighted the need for improved performance information and analysis. This is reflected in the need for a dedicated score card and audits for each of the priority areas as identified above.

- Embedding of learning improvement framework "closing the loop" between findings, learning, actions and improvement.
- Review/ refresh of SSCB governance and support
- Better arrangements to enable the views of children and young people to be heard and taken account of. This will include the continuing development of the "Student SSCB" and other means of ensuring the child's views about services etc.
- The views of parents and carers also need to be taken in to account by the SSCB
- Improving links with front line practice, conveying messages and learning, ensuring practitioner views and feedback



Actions to support the business plan:

- 1) Develop a score card for each of the priority areas.

What data / information is already available on the existing scorecard/ dashboard, and/or already made available on the board?

a. Childhood Neglect:

The SSCB Board at its meeting in September raised a number of assurance questions to be taken in to account when developing neglect scorecard:

- How well do we understand the nature and scale of neglect in Shropshire?
- Do we recognise if there are any underlying themes either geographical or issue based in Shropshire?
- How well do we identify neglect and respond early?
- How do we know we're making a difference?
- How well used is the GCP across agencies?
- How is the neglect strategy and toolkit embedded in agencies that don't predominantly work with children?
- How many referrers have completed GCP2, and what action has resulted?

b. CSE

The board may want information about:

- Numbers/ referrals of CH&YP victims of CSE
- Numbers/ referrals YP deemed to be at risk of CSE
- Perpetrators of CSE and convictions
- Information about children who go missing, including information from return interviews
- Information about services to support children who have experienced trauma through CSE
- Be assured that the services to address CSE is informed by the views and experience of children and parents.
- Information about awareness raising and training activity about CSE in relation to CH&YP; parents; professionals; wider community and relevant business.

c. Domestic Abuse

The board may want information about:

- Children exposed to DA (all levels)
- Data from MARAC in relation to children.
- Services for children and families in relation to DA

- 2) Ensure multi agency audits are aligned around priority areas and scheduled to enable timely reporting to Exec group, and subsequently to the Board. The intention being that the Board at each of it's meetings would focus on 1 of the priority areas in some depth, for reflection and future recommendations.
- 3) Schedule in assurance reporting on other safeguarding topics and single Agencies safeguarding performance to the Executive group.
- 4) Review reporting cycle to /executive and Board in line with the above developments